

Some of our legendary experiences along
www.pacificcoast.com.au for more information

SYDNEY TO BRISBANE, AUSTRALIA

Australian Reptile Park: Get up close and personal with Australia's largest collection of native mammals and reptiles at the legendary Australian Reptile Park, surrounded by the tranquil bushland at Somersby just 5 minutes from the Pacific Coast (F3) highway, and experience Australia's friendly hands on zoo!



Bouddi National Park: Located only a half hour drive from Gosford, the legendary Bouddi National Park features some of the most beautiful and secluded beaches along the Central Coast. Fringed by forests, heath and sandstone cliffs, the park is one of the most diverse and picturesque reserves for visitors to explore.

Avoca Beach: has been the mecca for visitors to the Central Coast for over a century. With its coastal ambiance and stunning beach, Avoca Beach will delight even the most discerning beach devotee. With something for every holiday-maker from surfing to swimming, fishing to diving, or just relaxing, discover the white sand, rolling waves and rockpool that makes up this legendary holiday hotspot.

Pelican Feeding: Watch and learn about the pelicans and marine life during the amusing and educational Pelican Feeding Show, one of the Central Coast's most popular tourist attractions, held daily at 3:30pm on The Entrance Foreshore.

Norah Head Lighthouse: Located at the northern end of the Central Coast, between The Entrance and Budgewoi and overlooking the scenic coastline of the Central Coast, the legendary Norah Head Lighthouse was the last manned lighthouse built in NSW and is a must-see attraction for any visitor.

Hunter Valley Vineyards: There are over 120 wineries located in the hinterland region of the legendary Hunter Valley, just a short drive from the cosmopolitan city of Newcastle, where visitors can sample some of the local food and wines, go for a tour or stay for the night in one of these world-class wineries.

Hunter Valley Gardens: Spanning over 60 acres, be amazed by the sensational sights, colours, and fragrances of the ten stunning feature gardens. Explore each garden one-by-one and enjoy an exciting journey through the thousands of flowers, trees, and shrubs with an air of discovery at every turn.

Merewether Beach: Merewether is a suburb off Newcastle, New South Wales, located 3 km from Newcastle's central business district. Today it is a popular surf beach and desirable residential area. Merewether Beach also runs along the southern coastal strip and includes the Merewether Ocean Baths.

Lake Macquarie: Located just one hour drive from Newcastle city- the legendary Lake Macquarie is one of the biggest coastal salt-water lakes in Australia, an ideal tourist destination for both recreation and relaxation.



Stockton Sand Dunes (Worimi Conservation Lands): Part of the traditional landscape of the Worimi people, this co-managed park has 32 kilometres of rolling sand dunes at the legendary Stockton Sand Dunes. It provides a natural wonderland for any tourist interested in sand boarding, camping, four-wheel driving or discovering the many treasures hidden beneath the shifting sands along the Stockton Bight.

Dolphins in Port Stephens: Port Stephens, just a short drive north of Newcastle, is home to the legendary bottle nosed dolphins, just waiting to be viewed by visitors in their natural playground – the crystal waters of the Pacific Ocean surrounding Port Stephens.

Ellenborough Falls: Located only one hour's drive from Taree on the Bulga Plateau at Elands, the legendary Ellenborough Falls are the largest single drop waterfall in the Southern Hemisphere and are an unforgettable sight for any visitor lucky enough to witness the falls.



Koala Hospital: The legendary Koala Hospital in Port Macquarie, run by the Koala Preservation Society, is the first and only koala hospital in the world dedicated solely to the care and preservation of koalas, 365 days a year.

The V-Wall: Located along the foreshore of Nambucca Heads the legendary 'V-Wall' contains hundreds of diverse artworks which visitors can simply admire or create their own to add to the 500 metre rock art gallery.

The Big Banana: Located within the coastal town of Coffs Harbour, the legendary Big Banana remains one of the most well known 'big' icons and a favourite tourist attraction, as visitors discover more about the regions local banana farms.

Nimbin: Discover the legendary Nimbin, Australia's alternative lifestyle capital only a short drive inland from Byron Bay. Become immersed in the unique culture of the local community whilst enjoying the scenic hinterland views and adventures, a must-see for any visitor to the region.

Angourie National Surfing Reserves: The legendary Angourie National Surfing Reserve is located just ten minutes from the far north coast town of Yamba adjacent to Yuraygir National Park. Legendary amongst surfers and tourists for its natural beauty and perfect breaks, the dedicated Angourie National Surfing Reserve ensures the beautiful environment and surfing culture remain protected for future generations.

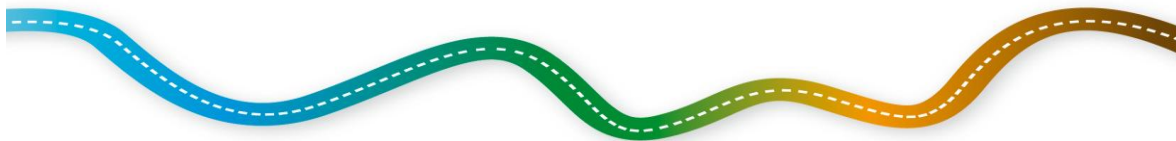


Byron Bay: The legendary Byron Bay is an area of beautiful scenic contrasts, human creativity and maritime history. Stunning sheltered beaches, unspoilt natural wilderness and undulating hinterland lay either side of this laid-back coastal town, making it a beautiful and popular destination all year round.

Wollumbin Mt Warning: The dominant peak of the Wollumbin National Park, Wollumbin-Mount Warning, is an iconic landmark of the Northern Rivers region. It is within the Gondwana Rainforests of Australia World Heritage Area and is easily accessible to Pacific Coast travellers with a short scenic diversion via the hinterland towns of Murwillumbah and Uki.



Protester Falls, Nightcap National Park: Located in the Gondwana Rainforests of Australia World Heritage Area only fifteen km from the pretty village of The Channon, the easy walk from Terania Creek Picnic Area winds its way through the bangalow palm forest to the base of the falls.



SEE WHERE IT TAKES you

The Legendary Pacific Coast E: enquiries@pacificcoast.com.au

www.pacificcoast.com.au